

Zenda



ECLATEC



ZENDA

ZENDA's signature is a magical trilogy. In the daytime, the light touch of its well-balanced design comes across as discreet and effective, giving it a resolutely contemporary look.

At night, the passerby can trust its reassuring lines implicitly as ZENDA unfailingly lights his path.

ZENDA constitutes the ultimate in LED lighting in terms of technical



performance combined with the new designs this new technology allows.

ZENDA can take either 21 or 30 LEDs, two colour temperatures, two fixed power levels and three lighting distributions (ECL (wide circular beam), ERE (narrow road lighting), ERL (wide road lighting)).





ZENDA



APPLICATIONS

- Urban roads, pedestrian walkways, cycle paths, squares, parks and pavements, residential streets
- Recommended heights : 4 to 5m

INFORMATION FOR SPECIFIERS

- IP 66
- IK10 (tested at 40 Joules)
- Class I or II
- Injection die cast aluminium body
- **ORA**_{LENS} lenses
- Colour temperatures: 4,100 K and 3,000 K
- Luminaire pre-wired
- Polyester powder coating, any RAL colour available, please enquire for other colours

ECO DESIGN

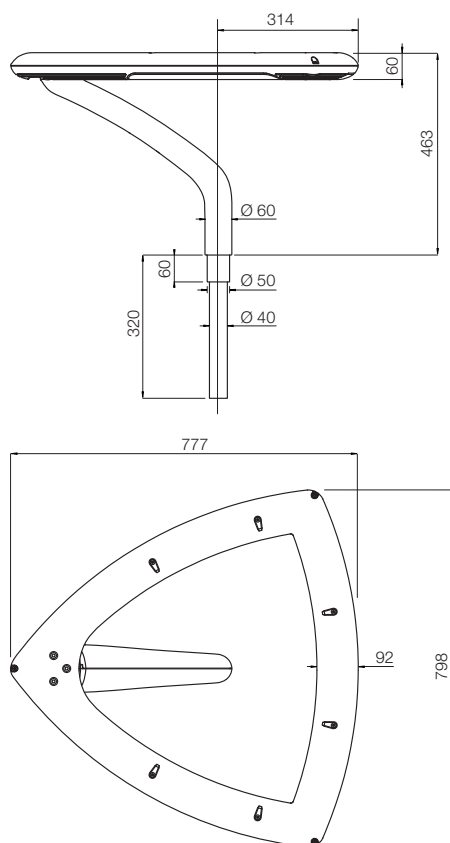
- Complies with the European RoHS directive
- ULOR < 3%
- High recyclability rate

MATERIAL ANALYSIS

- Aluminium 82%, Other 5%, Steel 6%, Plastic 7%

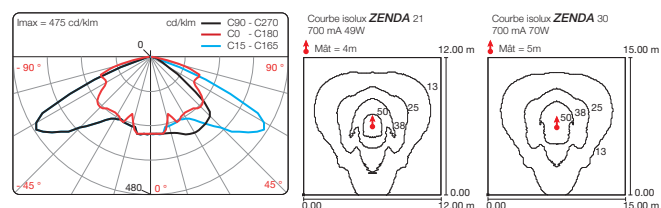
IP RATING

- Degree of protection IP66 according to standard EN 60529
- Extruded silicone gasket
- Luminaire breathes through activated carbon filter

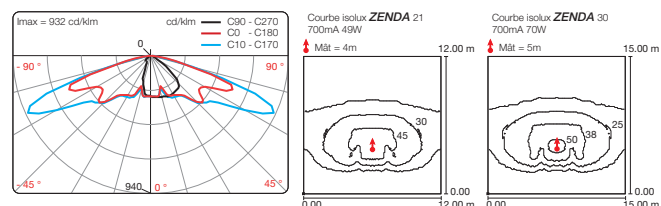


PHOTOMETRIC DISTRIBUTION

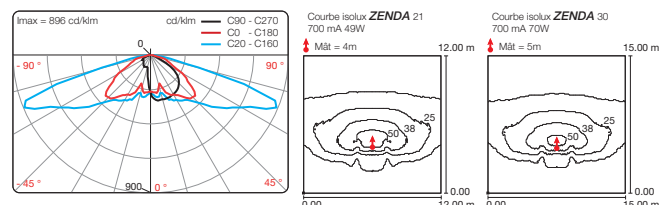
ZENDA 21-30 ECL



ZENDA 21-30 ERE



ZENDA 21-30 ERL



MECHANICAL INTERFACES

- Top mountings for Ø 60/62 mm poles
- Wall bracket on Ø 60/62 mm pole with fastening plate
- Wall bracket with fastening plate
- Luminaire tilted 0° or 10°



Tilt 0°



Tilt 10°



Wall bracket on pole with fastening plate

MAINTENANCE

Opening and closing

Opening by 7 screws

Control gear maintenance

Direct access to power units after removing cover

Maintenance of LED strips

Direct access after removing bowls

ZENDA		
Mounting	Top for Ø 60/62 mm poles Wall brackets and on poles with a fastening plate Luminaire tilted 0° or 10°	
Dimensions	Depth	777mm
	Width	798mm
	Height	463mm
Weight	12,3kg	
Windage	0,07m²	
Source accessibility	Direct access to the LED strips after removing the bowls, and to the power units after removing the cover	
Sources	3 strips of 7 LEDs	3 strips of 10 LEDs
Reflector and distribution variants	Individual lenses: ERE, ERL ou ECL	
Power unit	350 or 700mA	
Power	24 or 49W	35 or 70W
Luminous flux at maximum power at 4,100 K	3231lm	4616lm
Luminous flux at maximum power at 3,000 K	2895lm	4135lm

Key:

ECL: wide circular beam (uniforme distribution around the luminaire), **ERE**: wide road lighting (emphasis on interdistance between poles), **ERL**: wide road lighting (emphasis on interdistance between poles)

5 m

4 m

3 m

2 m

1 m

Zenda

- **Configuration**
Single light
Recommended height: 4 to 5m
- **Side mounting**
Outreach 250mm
3 possibilities:
 - Male fitting on Ø 60/62mm
cylindroconical steel pole
 - Fitting welded onto special pole
 - Wall bracket on pole with fastening
plate
- **Pole**
Cylindroconical steel Ø 60/62mm

Zenda

- **Configuration**
Single light
Recommended height: 4 to 5m
- **Top fitting**
Aluminium fitting
Penetrating mounting on the pole
- **Pole**
Cylindroconical steel Ø 60/62mm





Zenda

- **Configuration**

Wall bracket

Recommended height: 4 to 5m

- **Wall bracket**

Aluminium arm and steel fastening plate

Fastening plate fixed with 2 screws

Outreach 250mm



Zenda

ECLATEC

41 rue Lafayette, 54320 Maxéville

Tél : +33 3 83 39 38 00

www.eclatec.com

